



EN ▾

Copy link 🔗

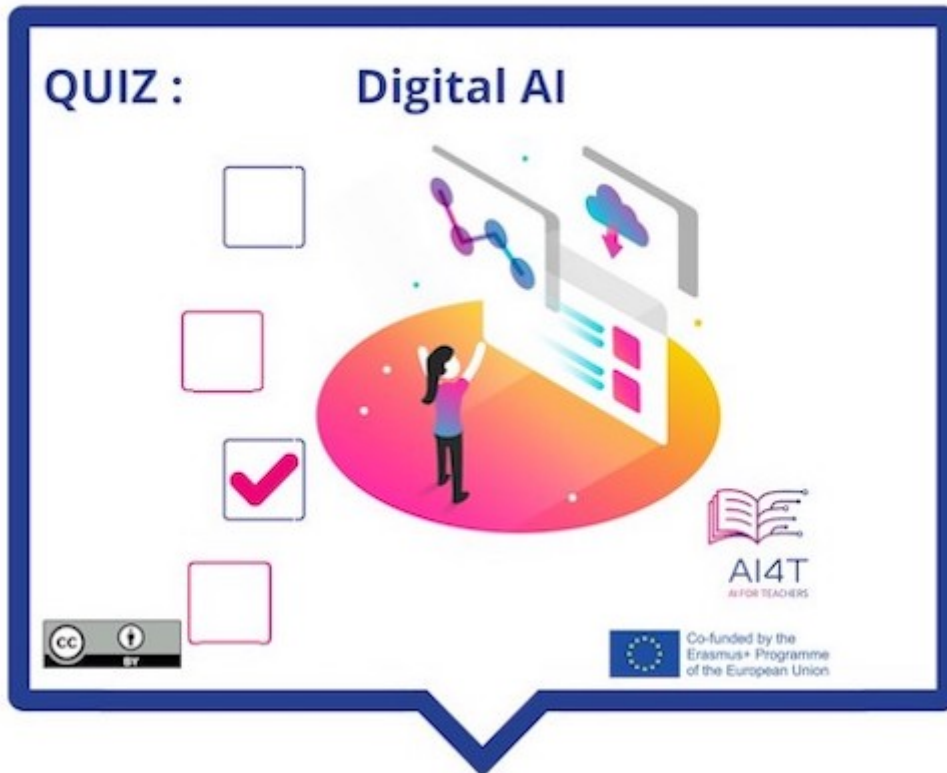
**i** Metadata

## ACTIVITY: DIGITAL AI

A short activity to take stock of Digital AI (also called "Machine Learning"), what it can and cannot do.

**"Access to the activity"**

*Click on the image below*





Select the correct statements about digital AI

explicitly represents the knowledge

has developed strongly with deep learning

is based on input data or feedback in the form of a reward

imitates how humans reason logically

uses the logic

mimics how humans learn by trial and error

Check

[Embed](#)